

# Understanding Your Contact Lens Care and Professional Fees

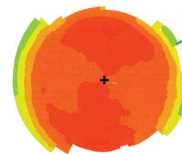


## What are contact lens professional fees for?

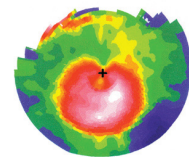
As a contact lens wearer additional tests are done for you that are necessary to make sure your eyes are healthy, that your lenses fit properly, and to ensure that you are seeing as well as possible. Contact lens professional fees are for the extra testing and time taken by the staff and doctor each year to properly evaluate your contact lenses.

## What types of additional tests are needed?

Corneal topography is one example of a test done for contact lens wearers. With this computerized data we can detect any undesirable changes of the cornea caused by wearing contact lenses. A second test uses the microscope to examine the fit of the contact lens and the health of the cornea. Thirdly, prescription measurements are done which are different than those for glasses.



A normal cornea  
as shown by  
corneal topography



An abnormal,  
distorted cornea

## Isn't this part of my annual eye exam?

These contact lens-related tests are done in addition to the eye examination. These are procedures that only need to be done for contact lens wearers, not for patients who don't wear contact lenses.

## How much does it cost?

Depending on the type of lenses you wear the cost for the professional services can vary. The office staff will be able to give you the exact cost for the lenses that you wear.

## Doesn't my insurance cover contact lens professional fee?

It depends on your plan's coverage. Most insurance plans cover a routine eye exam which determines your glasses prescription and evaluates your eye health. Contact lens services are separate procedures that often are not covered by insurance.



Jason A. Webb, O.D.

(308) 635-0800

820 W. 42nd St. Suite 1200 • Scottsbluff, NE 69361

[www.webbeyecare.com](http://www.webbeyecare.com)

We'll change the way you look at eyecare